

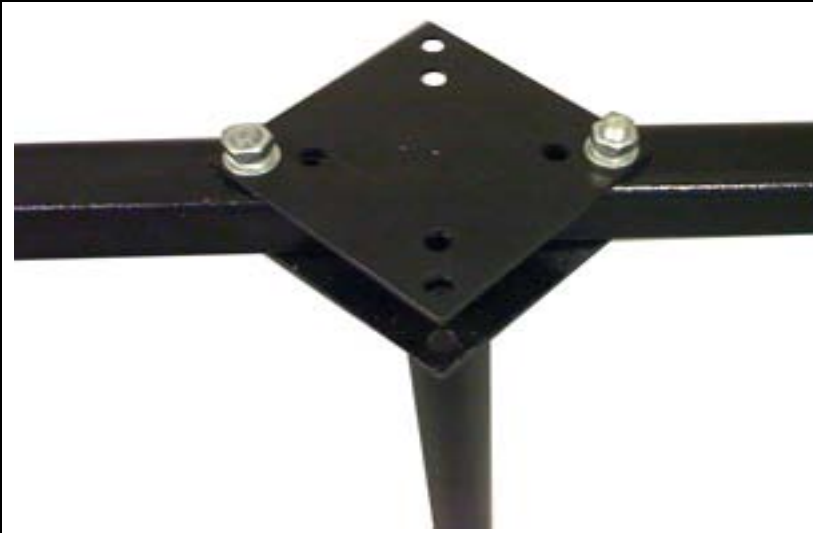


<p>Before installing the stand, test the dryer. Unplug the dryer before proceeding with installation.</p>	<p>Step 1: Test the Dryer</p>
	<p>Step 2: Position the stand base upside down as shown in the diagram.</p>
	<p>Step 3: Place the two legs on the stand base (with the wheels facing up) so that the holes on the legs line up with the holes on the stand base.</p>



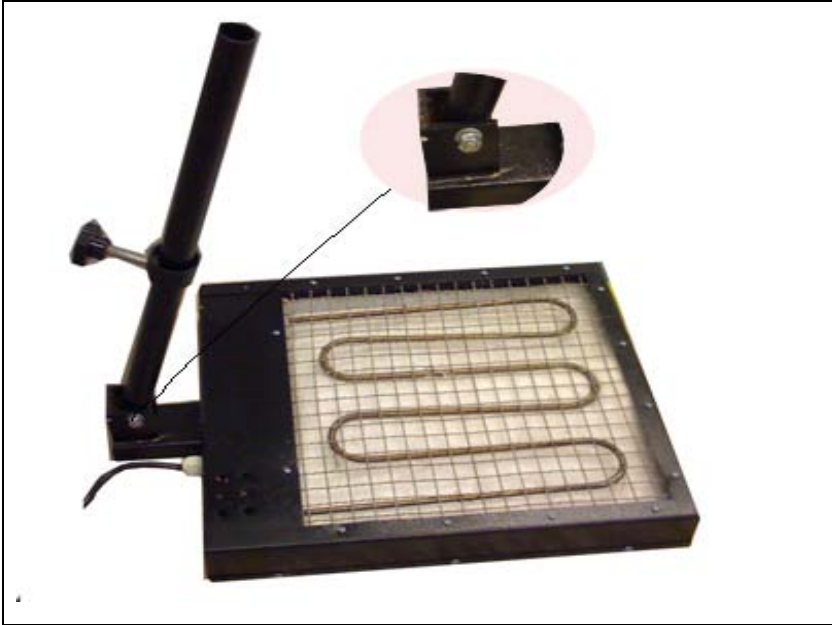
Step 4: Place the Square Panel above the legs, line it up with the holes of the legs/stand base and secure the legs with a bolt.



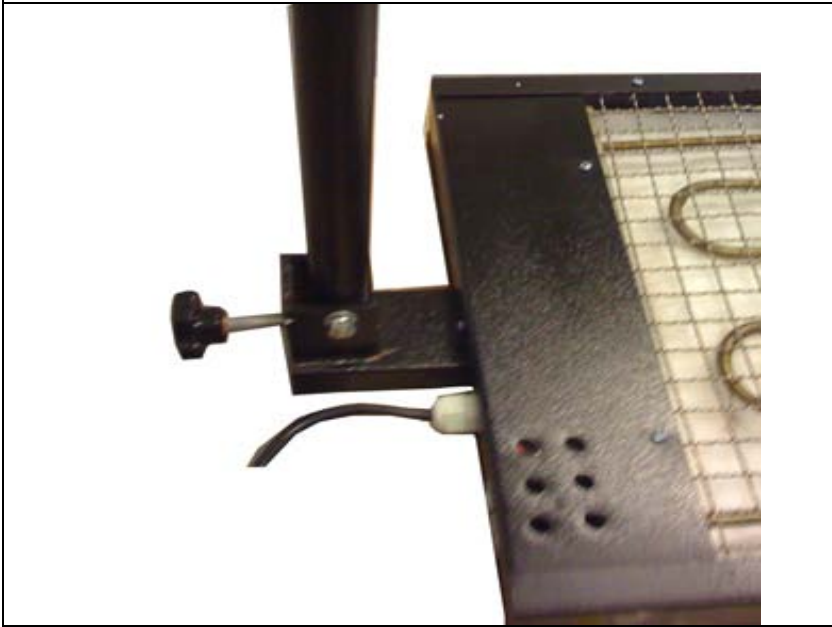
Step 5: Place the other two legs on the stand base at a 90 degree angle from the first two legs (with the wheels facing up). Attach each of these two legs to the stand base with a bolt.



Step 6: Install the remaining four bolts. Tighten all bolts securely.



Step 7: Attach the upper section of the stand pole to the dryer using a bolt.



Step 8: Insert the 'Level Adjustment Knob'.

	<p>Step 9: Place the stand base on the floor with the wheels on the bottom. Insert the upper section of the stand pole into the stand base as shown in the diagram.</p>
	<p>Finished</p>